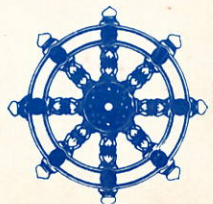




# MILILANI HONGWANJI



10th ANNIVERSARY MARCH 1987



Iohikawa

HO'OLE'A -- A CELEBRATION OF JOY

TENTH ANNIVERSARY CELEBRATION MONTH-- MARCH, 1987

\*\*\* Sunday, March 1, 1987 \*\*\*

Tenth Anniversary Celebration Month Kick-off

At the Oahu Hongwanji Sangha Day, members wore their special Ho'ole'a T-shirts and participated in the Sangha Day Festivities. Two specially decorated anniversary cakes (decorated by Pam Asato) were shared with the Oahu Hongwanji members.

\*\*\* Saturday, March 7, 1987 \*\*\*

Members and special guests gathered at Kemoo Farm Restaurant for a festive Anniversary Banquet with delicious food, fun and fellowship. Highlighting the evening was a slide show of the ten year history of Mililani Hongwanji.

\*\*\* Sunday, March 8, 1987 \*\*\*

A Career Fair was sponsored by and for the youth and their parents. The fair featured speakers from the Mililani Sangha.

The Ohigan Service was held during anniversary month.

\*\*\* Saturday, March 14, 1987 \*\*\*

A Gagaku and Bugaku Concert -- and outdoor full moon concert with music and dance most expressive of Buddhist ideas and sentiments.

\*\*\* Sunday, March 15, 1987 \*\*\*

Open House Program and Mililani Town Judo Championship Tournament.

\*\*\* Saturday, March 21, 1987 \*\*\*

"Following the Path of Buddhism"

A Culture Show featuring dance, food and displays from countries through which Buddhism came to Mililani.

\*\*\* March 23-24, 1987 \*\*\*

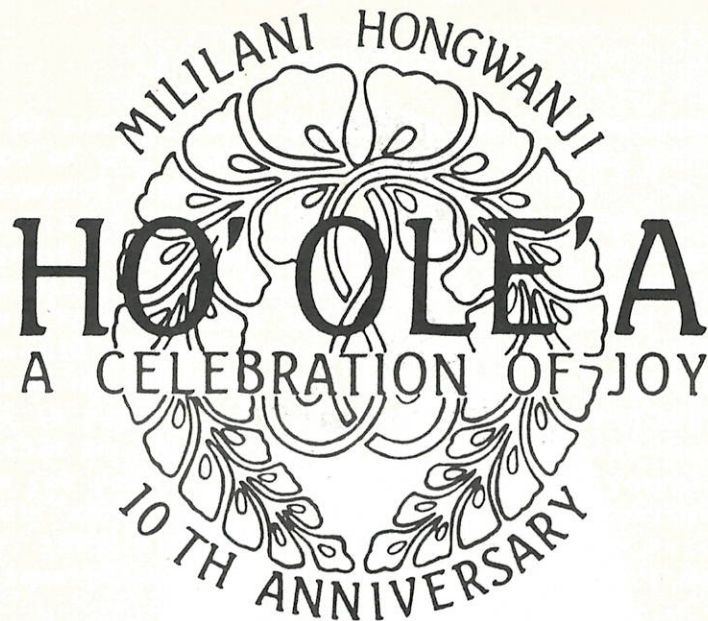
"A Celebration of Joy"-- a retreat for youth in grades 5-8 featuring Rev. Tatsuo Muneto.

\*\*\* Tuesday, March 24, 1987 \*\*\*

"The Joy of Living", a public lecture by the Rev. Tatsuo Muneto.

\*\*\* SUNDAY, MARCH 29, 1987 \*\*\*

\* ANNIVERSARY COMMEMORATION DAY \*  
(See Program--center of book)



Ho'ole'a translated means to cause great joy. On this observance of Mililani Hongwanji's Tenth Anniversary, we are grateful to the countless individuals who unselfishly contributed their resources, time and energies in order that we may enjoy the blessings of the Nembutsu.

As we continue our growth into the future, we are mindful of the foundations laid for us. Upon this foundation, we earnestly strive to live a life of truth and compassion and continually seek to enrich the lives of others through the Nembutsu.





## HONPA HONGWANJI

KYOTO JAPAN

### FELICITATION

I send my sincere greetings to you from the Hongwanji at Kyoto on this occasion of the 10th Anniversary Celebrations of the Founding of Mililani Hongwanji Mission.

Your Mililani Hongwanji Mission became a reality in February, 1977 because of the purposeful desires of the devotees of this area and the determination and earnest efforts of the ministers and members of the Kyodan. From the very beginning you organized the Dharma-school and young people as well as women's programs in a systematic manner and emphasized the Dharma-school so that it has grown in numbers from the original 18 pupils to become, so I have heard, the largest in enrollment within the Hawaii Kyodan. I pay my deepest gratitude and respects to you for your endeavors during these ten years.

I vividly recall that I officiated at the Dedication Ceremonies in February, 1981, and again seeing all of you in March, 1982 when I made a missionary tour of Hawaii and the meaningful meetings that we had.

Although we speak glibly of ten years as an epoch, I have no doubt but that when you think of them thousands of emotions crowd your minds. But we cannot live in the past! The coming ten years challenges you, and I hope that with the difficulties of the past that you conquered as the stepping stone you will with greater efforts endeavor to make the Mililani Hongwanji even more fruitful and the core of your Nembutsu life.

Faced with the rapidly changing conditions of modern society, we are apt to overlook the worth of life and the need of giving thoughts to today. But in actuality, are we not living within the maelstrom of the threat of nuclear war and social problems relative to human rights? Shinran Shonin, during his era, lived in a country beset by internecine wars, starvation, epidemics and natural catastrophies, and deeply contemplated on his self. Even so must we think on our lives that cannot be re-lived and see ourselves for what we are and hear the beckoning voice of Amida Buddha in order that we can live courageously and conscientiously today.

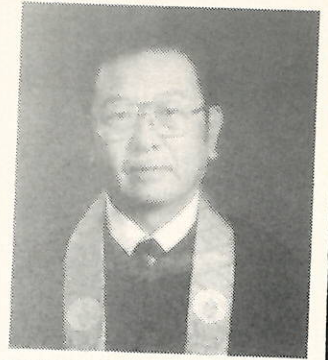
The ten years of Mililani Hongwanji history may be short in comparison to that of the older Missions in Hawaii. Yet, these must have been long years for you who supported and worked patiently to make it what it is today. The worth of Nembutsu truly becomes manifest when, hand in hand, we tackle the difficult problems that arise from time to time.

The foundation has been laid. Build upon it then a Mission where mutual trust can be nurtured and wherein will be the fountain-head of Nembutsu hearing. I congratulate you and look forward keenly to the greater advances of the Mililani Hongwanji Mission.

March 29, 1987

MONSHU KOSHIN OHTANI  
Jodo Shinshu Hongwanji-ha

# BISHOP'S MESSAGE



## Honpa Hongwanji Mission of Hawaii

### MESSAGE

The machinery for the founding of Mililani Hongwanji began to move with the passage of Resolution #8, "Purchase of Land in Mililani Town," at the 64th Legislative Assembly in February of 1976, and the purchase was consummated in December, of that year.

Mr. Charles Sakaguchi, who was both President of the Hawaii Kyodan and the Mililani Project Committee Chairman, reported in 1982 that "Mililani Hongwanji started with a handful of sincere followers of Shin Buddhism, but through their devotion and dedication, they have led the way for others to follow, and it is now one of the most active temples in the Hawaii Kyodan. I know that all of us who participated and contributed to the project, feel nothing but a sense of deep pride and joy in accomplishment in the great partnership that was created."

Today, ten years after the establishment of the Sangha at Mililani, we are equally elated and proud that this unique project was undertaken. Much credit goes to the members of Mililani, but because of the financial and moral support put into the project by the entire Hawaii Kyodan, the entire Hongwanji community throughout the State shares in the joys of this celebration.

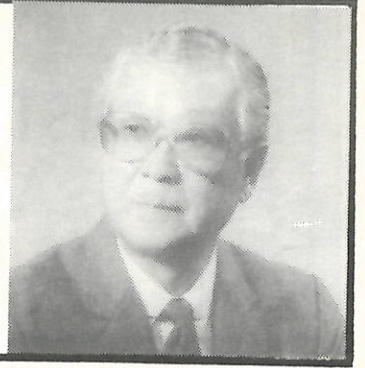
May your future be long and bright.

Gassho,

A handwritten signature in cursive script that reads "Yoshiaki Fujitani".

Yoshiaki Fujitani, Former Bishop  
Honpa Hongwanji Mission of Hawaii

# KYODAN PRESIDENT'S MESSAGE



## Honpa Hongwanji Mission of Hawaii

Message

February 17, 1987

Mililani Hongwanji is one of the brightest lights in our entire Honpa Hongwanji Mission of Hawaii organization today. Beginning from 'scratch' just 10 years ago, it has grown to a membership of over 125 families.

There are many in our 36 affiliated temples whose membership exceeds Mililani's. However, none comes close to the youthfulness, effervescence, vibrancy and dedication of its membership. Whenever I visit the site and meet with the members, my hopes and optimism for the future of the Hongwanji movement are dramatically reinforced. I consider the Mililani Hongwanji as a model of what the Hongwanji ought to be in the years ahead.

As we celebrate your first decade of service as an official unit of the statewide Mission, we must not forget the foresight, will power, and acumen of my predecessor, Immediate Past President Charles H. Sakaguchi, and the Hawaii Kyodan under his leadership which laid the groundwork for the establishment of a Hongwanji unit in Mililani town. Their aspirations have been more than fulfilled by the current members, many of whom arduously and devotedly moved from house to house, committing members to the development of a temple of their own with the help of the Hawaii Kyodan. I remember well the Sundays when services were held in the community centers.

Mililani Hongwanji in this first decade has built a fine foundation for a tradition of its own in the propagation of Jodo Shinshu teachings and appreciation of the wisdom and compassion of the Amida Buddha.

May you enjoy many more satisfying and prosperous years.

Gassho.

Albert H. Miyasato, Pres.  
Honpa Hongwanji Mission  
of Hawaii

# MINISTER'S MESSAGE



## Mililani Hongwanji

On behalf of the Mililani Hongwanji, it is my great pleasure to welcome you to our Tenth Anniversary Celebration and to the dedication of our Educational Building.

In the Homages (Kikyo-mon) it is written, "Difficult it is to hear the Teachings of the Blessed One; now we hear them." We are very fortunate that we are able to listen, enjoy and share the Teachings. We are able to do so today because of the unselfish dedication of many people.

Ten years ago a small group of people who heard Amida Buddha's calling worked to establish a Sangha in Mililani. Their aspirations and untiring efforts encouraged many more people to become a part of the Sangha. Today, Amida's calling continues, and the Sangha continues to grow.

We are also grateful to many Nembutsu friends throughout the state who gave us encouragement, advice, and generous donations. Without their kindness, it would not be possible for us to celebrate this joyous occasion.

The theme for this celebration is "HO'OLE'A", which means to be joyous. It is certainly a great joy for us to be able to share this day with you as we continue to live the O-Nembutsu. However, as we are still a young temple, we ask for your continued support.

May this celebration be an inspiration all of us to rededicate our lives to the O-Nembutsu and to work diligently for the growth and enrichment of our daily lives.

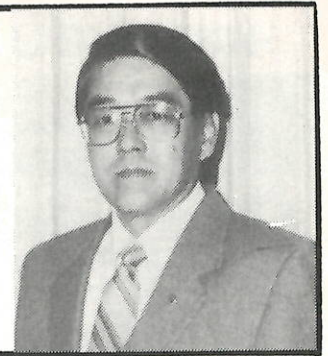
In gassho,

*Yukiko Motoyoshi*

Yukiko Motoyoshi  
Resident Minister



# PRESIDENT'S MESSAGE



**Mililani Hongwanji**

## MESSAGE

On behalf of the Mililani Hongwanji Kyodan, I would like to welcome all of you to our 10th Anniversary Celebration and new Educational Building Dedication.

To capture the spirit of this celebration, we have chosen the Hawaiian word "Ho'ole'a" or "Celebration of Joy" as our theme. For it is joy that is in our hearts when we realize that our Sangha has existed for 10 long years since we started as a fledgling temple in 1977. And it is joy that is also in our hearts for the opportunity of listening to the Dharma for these past 10 years.

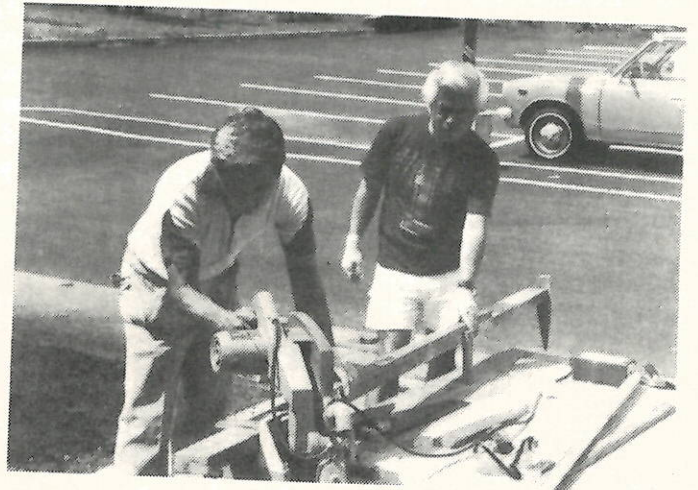
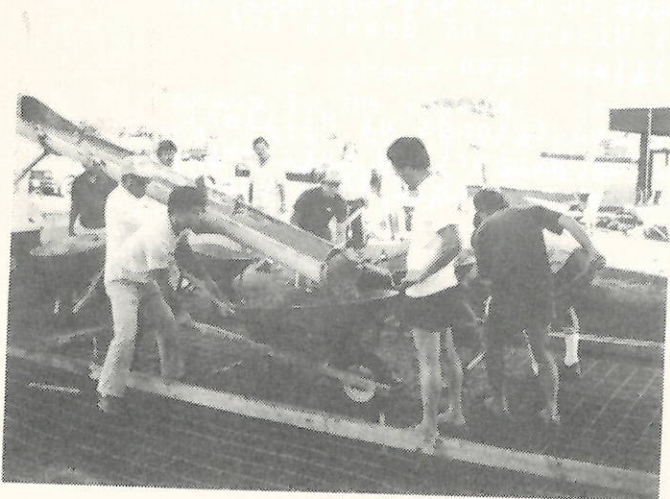
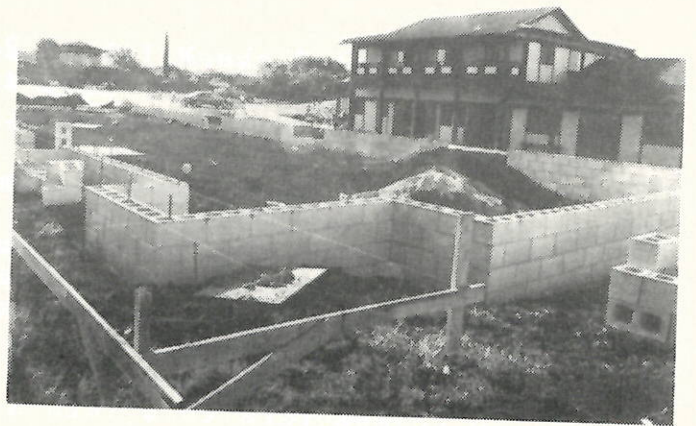
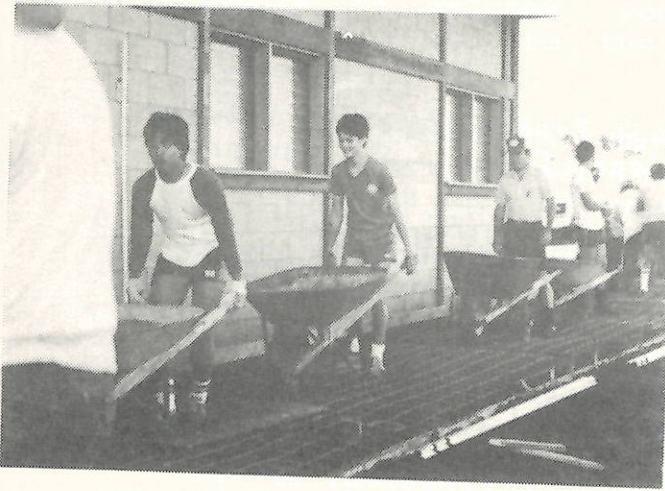
To commemorate this 10th Anniversary Celebration, we are formally dedicating our new Educational Building. It is our hope that this Educational Building will be yet another vehicle for the propagation of the Nembutsu Teaching in Mililani Town. With heartfelt gratitude and joy, we dedicate this Educational Building in appreciation to the Honpa Hongwanji Mission of Hawaii for establishing a Hongwanji temple in Mililani Town.

I would like to thank the members and friends of Mililani Hongwanji for your dedicated and generous support to our temple during the past 10 years and may you celebrate this 10th Anniversary with Joy!

In Gassho,

A handwritten signature in cursive script, appearing to read "Gordon Y. Watanabe".

Gordon Y. Watanabe, President  
Mililani Hongwanji



# THE MILILANI HONGWANJI EDUCATIONAL BUILDING

Architect: Design-Engineering, Inc.  
Contractor: Hiroshi Monma,  
General Contractor, Inc.  
Groundbreaking: August 4, 1985  
Dedication: March 29, 1987

The Educational Building is a one level large tile building which can be divided into three separate classrooms. A large kitchen with roll-up serving window, and restroom facilities complete this 3000 square foot building.

Shortly after the young Mililani Hongwanji Sangha assumed occupancy in the Multi Purpose Building, the board of directors began serious long-range planning, and the plan to build an educational building was initiated.

Chaired by Paul Tanaka, the Educational Building Committee was established with two sub-committees-- design and finance. This was the biggest single project undertaken by the Mililani Hongwanji. The original design was for a two-story building to insure ample space for all future activities. It was the challenging task of the finance committee to raise funds. Funding such large projects is always very difficult and the total goal was not met. However, members of the Mililani Hongwanji are not ones to give up and ground breaking for the Educational Building was held in August, 1985.

With funding short, the two-story plan was reduced to one level, and many of the tasks-- such as painting, pouring concrete for the sidewalks, tiling the floors, completing the kitchen, putting in the ceiling-- had to be done by the members. Funds provided only the shell of the building and Mililani Hongwanji had to rely on the skills of its membership to complete the building. Members worked at a furious pace in an effort to get most of the building work done by the Bon Festival in July, 1986. They then worked earnestly to complete the building for dedication during the Tenth Anniversary Celebration in March, 1987.

The Educational Building is structurally designed to add the second floor when funds become available. In accordance with the Hongwanji slogan of 1981 when the first building was dedicated, "LIKE PARENTS, LIKE CHILDREN, SO GROWS OUR SANGHA", Mililani Hongwanji will continue to grow. For now, let us enjoy this "HO'OL'EA".





## Introducing the Mililani Hongwanji



The Mililani Hongwanji is one of thirty-six temples of the Honpa Hongwanji Mission of Hawaii. The Honpa Hongwanji Mission of Hawaii plans and implements all of its programs toward the understanding and appreciation of Shin Buddhism.

### The Essentials of Jodo Shinshu:

**Name:** Hongwanji Branch of Jodo Shinshu (Nishi Hongwanji).

**Founder:** Kenshin Daishi Shinran Shonin (1173-1262).

**Object of Worship:** Amida Buddha (Namu Amida Butsu).

**Doctrine:** By entrusting oneself in the Teaching of the Nembutsu, and rejoicing in the assurance of becoming a Buddha, one will in a spirit of heartfelt gratitude, live a life of service to fellow human beings.

**Distinctive Features:** Jodo Shinshu is a religion bounded by the joys in the truth of Nembutsu. They are prudent in their speech and action, virtuous and law abiding, and together they will endeavor to spread the joys of the True Teaching to the rest of mankind. Being keenly aware of the law of karma (Principle of cause and effect), they will not resort to petitionary prayers and incantations or rely upon superstitious prophecies.

**Membership in the Mililani Hongwanji:** a Gojikai member follows the teachings of Shinran Shonin by participating in Temple services and activities, and by providing the financial and physical support needed to maintain the temple. There are other types of membership, and all members are welcome.

**Resident Minister:** Rev. Yukiko Motoyoshi

**Location:** 95-257 Kaloapau St.  
Mililani Town, HI 96789

**Phone:** 625-0925

## ORGANIZATIONS:

KYODAN (Gojikai)-- General membership organization.  
President: Gordon Watanabe.  
Open Board of Directors meeting on the second Wednesday of each month at 7:30 PM at the church. Various committees to carry out the work of Mililani Hongwanji need volunteers.

FUJINKAI-- Women's Auxiliary.  
President: Jean Sanehira.  
General membership meeting on the first Wednesday of each month at 7:30 PM at the church.

SR.YBA-- Social, religious and service organization for men and women.  
President: Jan Youth.  
General Membership meeting on the fourth Tuesday of each month at 7:30 PM at the church.

JR. YBA-- Social, religious and service organization for youth in grades 9-12.  
President: Jaimee Yoshizawa. Advisor: Jan Youth.  
General meeting on the second Sunday of each month after Sunday Morning Service.

DANA CLUB-- Social, service and religious organization for youth in grades 5-8.  
President: Wayne Akiyama.  
Advisors: JoAnn Kawachi and Sharon Kuboyama.

MILILANI HONGWANJI JUDO CLUB-- Organization to further the sport of Judo and to provide an activity for the youth of the Church and Community. Affiliated with the 50th State Judo Association since 1986, the club holds practice on Mondays and Thursdays, 5:00-6:30 PM.  
President: Clyde Tanaka.  
Head Instructor: David Nishioka

MILILANI HONGWANJI KI-AIKIDO CLUB-- Organization, open to men, women and children, to practice the coordination of mind and body. Practice is held on Mondays and Thursdays from 7:00-8:30 PM.  
Head Instructor: Sakae Kawamoto  
Instructors: Eric Nonaka, Richard Uchima.



## ACTIVITIES:

### SERVICES:

Family Worship Service-- This is a religious service held on the first Sunday of each month for the entire family. It is conducted in English and begins at 9:00 AM.

Sunday Morning Service-- A simple worship program held each Sunday at 9:00 AM.

Japanese Language Service-- Held monthly on the third Thursday of each month at 9:00 AM.

### Special Services--

Buddhist Services: Hoonko (Memorial Service for Shinran Shonin), Nirvana Day Service (Death of Shakyamuni Buddha), Spring Higan Service Dedication Day, Hanamatsuri Service (Buddha Day--Birth of Shakyamuni Buddha), Gotan-e (Birth of Shinran Shonin), Obon (a gathering of joy), Autumnal Higan Service, Eitaikyo Service, Bodhi Day Service (Enlightenment of Shakyamuni Buddha).

Other Services-- New Year's, Memorial Day, Mother's Day, Father's Day, Thanksgiving Day, etc.

Personal Services-- Wedding, Memorial, Infant Initiatory, Bedside Services and others.

DHARMA SCHOOL: Service and religious education are provided for children and adults on a weekly basis beginning at 9:00 AM each Sunday. The Dharma School Children's Chorus for children interested in music follows the Dharma School calendar.

DHARMA CLASSES: To provide a more intensive and systematic religious education for the adults. Classes are held monthly.

ANNUAL CHURCH PROJECTS: Participation in the Mililani High School Carnival, Bazaar, Obon Lantern Parade.

SEMINARS, RETREATS, and other RELIGIOUS PROJECTS.

SPECIAL INTEREST AND CULTURAL PROGRAMS.



Above: Rev. Tetsuo Unno and many Nembutsu teachers came to Mililani for Retreats, Special Services and Coffee Hours.  
Left: Our Dharma School parents and children enthusiastically participate in special programs.  
Below: Hanamatsuri is always a special time at Mililani Hongwanji.



TENTH ANNIVERSARY COMMEMORATION SERVICE

Sunday, March 29, 1987  
9:00 A.M.

Officiant: Rev. Yoshiaki Fujitani  
E-Yaku-Sha: Rev. Thomas Okano

M.C.: Betty Shibuya  
Organist: Gail Taira

Temple Bell ..... Rev. Thomas Okano  
Opening Remarks ..... Betty Shibuya  
Gatha: "Ondokusan" ..... Congregation  
Entrance of Officiant and Ministers  
Offering of Flowers .... Jaimee Yoshizawa, Corri Lee Tanaka  
Gatha: "Shoshin San" ..... Rev. Shokai Suzuki  
Sutra: "Junirai"  
  
Sanbujo  
Junirai  
Shiku Nembutsu  
Eko  
  
Monshu's Message ..... Read by Rev. Yoshikazu Saito  
Gatha: "Namu Amida Butsu" ..... Congregation  
Offering of Incense:  
  
Hawaii Kyodan ..... Dr. Albert Miyasato  
Oahu Hongwanji Council ... Mr. Jack Yoshimura  
Mililani Hongwanji ..... Mr. Gordon Watanabe  
  
Congratulatory Message ..... Dr. Albert Miyasato  
Shinshu Pledge ..... Led by Kenson Kuboyama  
Commemorative Message ..... Rev. Yoshiaki Fujitani  
Nembutsu ..... Congregation  
Closing Remarks ..... Betty Shibuya



\*\*\* EDUCATIONAL BUILDING DEDICATION \*\*\*

\*\*\* CELEBRATION LUNCHEON AND KEIROKAI \*\*\*

Words of Thanksgiving by Rev. Yukiko Motoyoshi

Luncheon in new Educational Building

K E I R O K A I

Opening Remarks ..... M.C., Bob Asato  
Presentation of Keirosha ..... Robert Y. Asato  
Lynn Hayase  
Presentation of Gifts ..... Rev. Yukiko Motoyoshi  
and Gordon Watanabe  
Congratulatory Messages ..... Rev. Yukiko Motoyoshi  
and Gordon Watanabe  
Response on behalf of Honorees ..... Mr. Matao Matsumura  
Closing Remarks ..... M.C.

H O N O R E E S

Mrs. Shigeko Abe	Mrs. Shinayo Matsumoto
Mrs. Hatsue Akamine	Mrs. Elsie Matsumura
Mr. Susumu Ando	Mrs. Marion Matsumura
Mrs. Utako Ando	Mr. Matao Matsumura
Mr. Raymond Asato	Mr. Teruo Matsumura
Mrs. Tsuruko Asato	Mr. Charles Nishioka
Mrs. Chiyoko Chinen	Mrs. Elsie Nishioka
Mr. James Honjiyo	Mrs. Elsie Nunotani
Mr. Susumu Iwamoto	Mr. Walter Nunotani
Mrs. Natsue Kawamoto	Mrs. Masue Toma
Mr. Sakae Kawamoto	Mr. Shinji Toma
Mr. Masaru Kido	Mr. Jiro Wakumoto

\*\*\* Entertainment Program \*\*\*

## ONDOKUSAN

Nyorai daihi no ondoku wa,  
Mio koni shite mo hozu beshi.  
Shishu chishiki no ondoku mo,  
Hone o kudakite mo shasu beshi.

## Namu Amida Butsu

Shinkaku

R. R. Bode

1. When life is fair And sun-light gilds the day,  
2. When comes temp - ta - tion Lur - ing us to sin,  
3. E'en though our way Leads 'neath a dark - en'd sky

When for - tune smiles And flow'rs a - dorn our way; —  
When doubts and fears, As - sail us from with - in; —  
And to our loved ones Pain and death draw nigh; —

Oft' let us pause With grate - ful hearts to say  
This be our prayer, The vic - tory we shall win,  
Our tears may flow, Yet trust - ing - ly we cry

Na - mu A - mi - da Bu - - tsu.

**JUNIRAI**  
(The Twelve Adorations)

- |   |  |
|---|--|
| 1. Kei shu ten nin sho ku gyo<br>A mi da sen ryo zoku son<br>Zai hi mi myo an raku koku<br>Mu ryo bushi shu i nyo     | 7. Kon tai ho ken chi sho ke<br>Zen gon sho jo myo dai za<br>O hi za jo nyo sen no<br>Ko ga cho rai mi da son.           |
| 2. Kon jiki shin jo nyo sen no<br>Sha ma ta gyo nyo zo bu<br>Ryo moku jo nyaku sho ren ge<br>Ko ga cho rai mi da son. | 8. Jippo sho rai sho busshi<br>Ken gen jin zu shi an raku<br>Sen go son gen jo ku gyo<br>Ko ga cho rai mi da son.        |
| 3. Men zen en jo nyo man gatsu<br>I ko yu nyo sen nichu gatsu<br>Sho nyo ten ku ku shi ra<br>Ko ga cho rai mi da son. | 9. Sho u mu jo mu ga to<br>Yaku nyo sui gatsu den yo ro<br>I shu seppo mu myo ji<br>Ko ga cho rai mi da son.             |
| 4. Kwan non cho dai kwan chu ju<br>Shu ju myo so ho sho gon<br>No buku ge do ma kyo man<br>Ko ga cho rai mi da son.   | 10. Hi son bussetsu mu aku myo<br>Yaku mu nyo nin aku do fu<br>Shu nin shi shin kyo hi son<br>Ko ga cho rai mi da son.   |
| 5. Mu bi mu ku ko sho jo<br>Shu toku kyo ketsu nyo ko ku<br>Sho sa ri yaku toku ji zai<br>Ko ga cho rai mi da son.    | 11. Hi son mu ryo ho ben kyo<br>Mu u sho shu aku chi shiki<br>O jo fu tai shi bo dai<br>Ko ga cho rai mi da son.         |
| 6. Jippo myo mon bo sasshu<br>Mu ryo sho ma jo san dan<br>I sho shu jo gan riki ju<br>Ko ga cho rai mi da son.        | 12. Ga setsu hi son ku doku ji<br>Shu zen mu hen nyo kai sui<br>Sho gyaku zen gon sho jo sha<br>E se shu jo sho hi koku. |

**SHINSHU PLEDGE**

1. I take my refuge in the Vow of the Buddha. Reciting his Sacred Name, I will live through life with strength and serenity.
2. I adore the light of the Buddha. I will put my effort in my work with self-reflection and gratitude.
3. I follow the Teachings of the Buddha. Discerning the Right Path, I will spread the True Dharma.
4. I rejoice in the Compassion of the Buddha. I will respect and help others and do my best for the welfare of mankind.

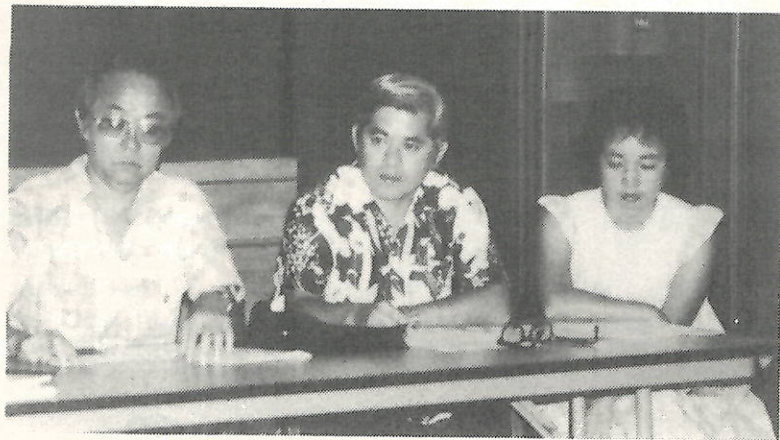
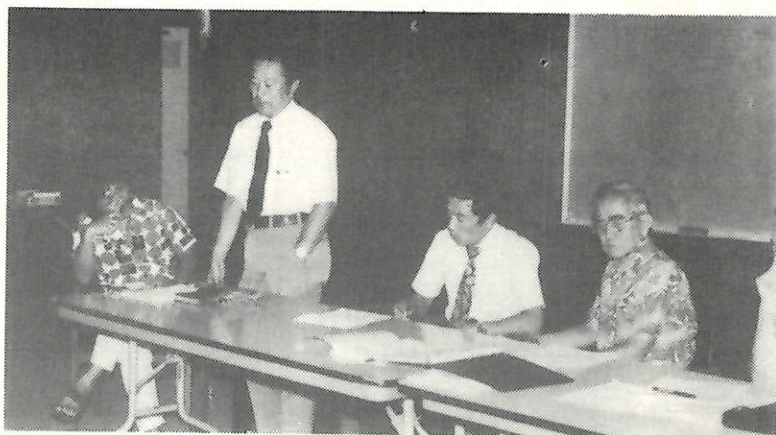
## TEN SPECIAL YEARS 1977-1987

The past ten years have been TEN SPECIAL YEARS for the Mililani Hongwanji, and it is with great joy that we celebrate the Tenth Anniversary of the founding of Mililani Hongwanji in 1977. Beginning in 1976, a few Nembutsu followers led by Bob and June Asato and Mel Hayase gathered at each others' homes to worship and to discuss various topics of Buddhism and the Hongwanji. These cozy but sometimes heated sessions helped to develop a bond of friendship and respect that has endured and grown to include the many wonderful people who have joined the Mililani Sangha over the past ten years. Each year of the ten year history has been a special year, for with each year we welcomed new members and added new programs. We built strong bonds of friendship and trust as we worked and played together as the Mililani Hongwanji grew. Each person who has been associated with the Mililani Hongwanji is special too, and it is with great joy and deep appreciation that we share this celebration with all who have witnessed and participated in these special years.

This brief history and pictorial essay chronicles the ten special years with many of the hundreds of special people associated with the Mililani Hongwanji.

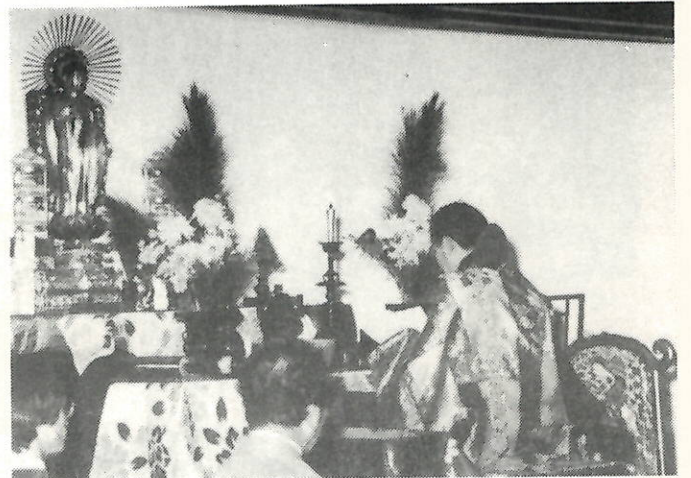


- April, 1976 The first meeting of Mililani Buddhists (9) is held at the home of Melvin T. Hayase.
- Aug. 29, 1976 First Community Buddhist Worship Service held in Mililani at the Community Recreation Center with Bishop Yoshiaki Fujitani officiating.
- Dec., 1976 Hawaii Kyodan purchases property (1.792 acres) in Mililani.
- Jan., 1977 Monthly Family Service begins at Rec Center II. SUNDAY SCHOOL begins with 18 students and seven teachers.
- Feb. 6, 1977 The Mililani Honganji Buddhist Sangha is chartered with 44 charter members. Rev. Norito Nagao of Wahiawa Hongwanji is designated Minister Advisor.
- Aug. 13, 1977 First Obon service and Bon Dance held.
- April, 1978 FUJINKAI is organized.
- Nov. 1, 1979 Rev. Kojun Suehira, first Resident Minister, is assigned to the Mililani Hongwanji.
- Jan., 1980 SR. YBA is organized.





- Feb. 10, 1980 Groundbreaking for the Mililani Hongwanji Multi-purpose building.
- July, 1980 Membership passes 100 families.
- Nov., 1980 Construction of Multi Purpose building and minister's residence is completed.
- Dec. 4, 1980 First service is held in the Mililani Hongwanji building officiated by Rev. Suehira.
- Feb. 13-14 The Dedication of the Mililani Hongwanji is celebrated by the Honpa Hongwanji Mission of Hawaii with participation by His Eminence Monshu Koshin Ohtani and Lady Noriko. Activities include Ki-Kyo-Shi-Ki (Confirmation Rites), Chigo Parade, Dedication Service, Dedication Ceremony, Dinner, Keirokai, and Open House program.
- April, 1981 The Mililani Hongwanji begins participation in the annual Mililani High School Athletic Booster Club carnival.
- July, 1981 KI-AIKIDO program begins at Mililani Hongwanji.



Highlights of 1981 included the completion of the multi-purpose building, the Dedication Celebration, and the Altar Dedication.

Aug. 2, 1981 The Altar Dedication is observed with a special service and tree planting.

Sept., 1981 DANA CLUB (originally known as Youth Club and Teen Club) is organized.

March, 1982 Mililani Hongwanji observes Fifth Anniversary Celebration Month with a special service, a banquet, public programs, and the construction of an address sign with a time capsule (to be opened on the first Sunday in the 21st century).



Special friends of the Mililani Hongwanji were honored guests at our "Kansha" Banquet during Fifth Anniversary Month in March, 1982.

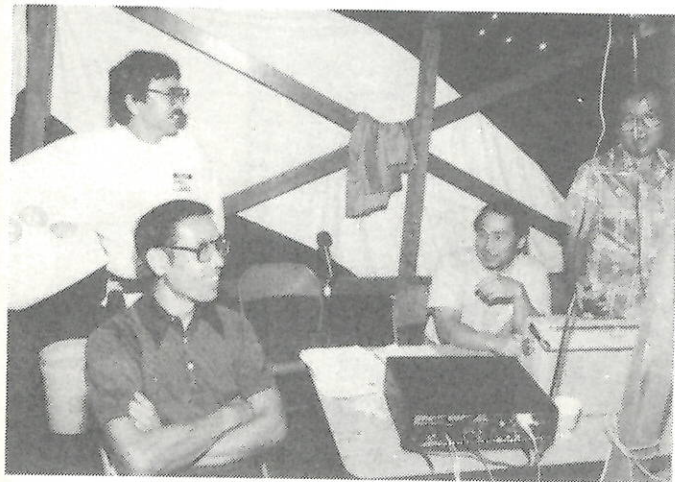
Top: Bishop Yoshiaki and Mrs. Tomi Fujitani  
Mr. Charles K. and Mrs. Kay Sakaguchi.

Bottom: Rev. Norito and Mrs. Mieko Nagao  
Rev. Kojun and Mrs. Yoshie Suehira.

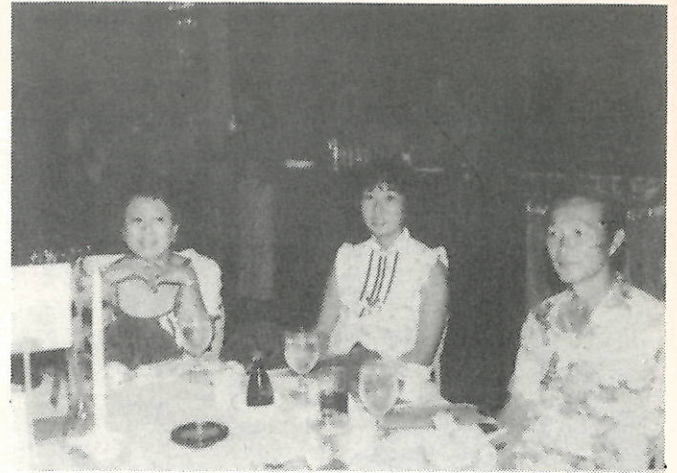




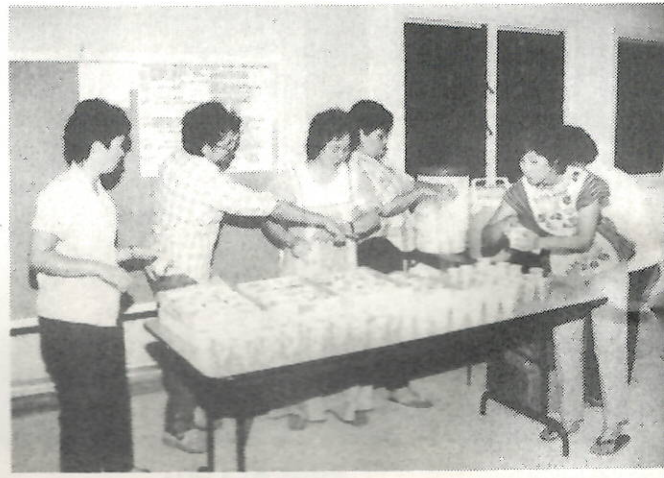
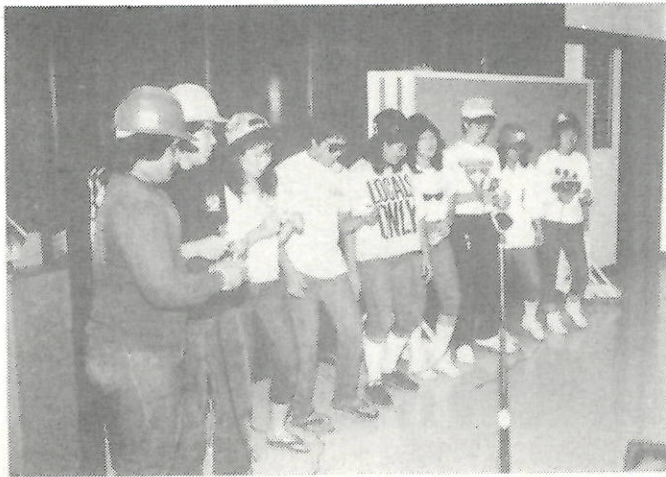
Highlights of 1982 included the Fifth Anniversary Celebration with the Banquet and the Time Capsule ceremony, and the formation of the Judo Club.



Obon at Mililani Hongwanji is a time when members, young and old, turn out for worship, work, dance, and play.



- July 9, 1982    The first annual Obon Lantern Parade winds its way through the streets of Mililani.
- July, 1982     The Mililani Hongwanji JUDO program is organized.
- Sept., 1982    The CHILDREN'S CHORUS is organized.
- June, 1983     The JR. YBA is organized.
- Dec., 1983     Membership passes 200 families and is celebrated with a banquet and family program.
- July 31, 1984   Rev. Suehira leaves Mililani Hongwanji to further his education.
- Aug. 1, 1984    Rev. Hiromi Kawaji of Pearl City Hongwanji is appointed Minister Advisor.



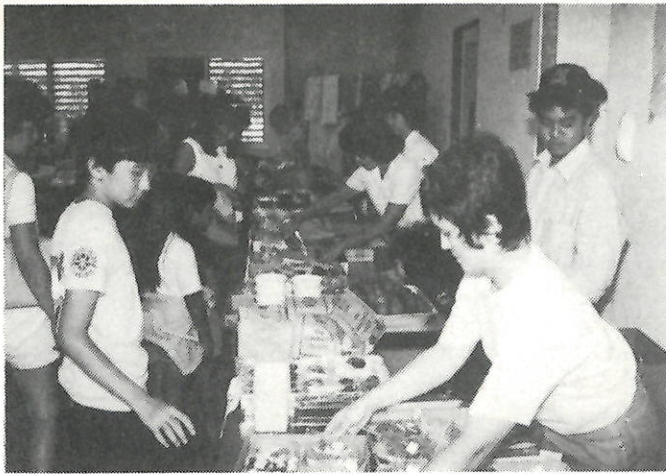
No matter what the occasion -- party time or work time -- the members of the Mililani Hongwanji can be counted on !

- Apr. 1, 1985 Rev. Yukiko Motoyoshi becomes the second Resident Minister at Mililani Hongwanji.
- Aug. 4, 1985 Groundbreaking for the Mililani Hongwanji Educational Building.
- Dec., 1985 KARAOKE Club is organized.
- Feb., 1986 Educational Building shell is completed.
- May 26, 1986 Baccalaureate Service and Luau is held for Class of 1986.
- Nov. 22, 1986 Successful Bazaar is sponsored.
- March, 1987 Mililani Hongwanji Observes Tenth Anniversary Celebration Month with a special service, a banquet, public programs, youth programs, judo tournament, open house, dedication of Educational Building, luncheon and keirokai.



Top: Our first home grown Mililani Buddhists -- the Class of 1986.

Bottom: Members working hard as usual.



Each year Mililani Hongwanji members turn out full force for sushi making, carnival preparations, bazaar preparations and other projects. They are always ready for work as well as for play.

TENTH ANNIVERSARY CELEBRATION COMMITTEE

General Chairman ..... Rev. Yukiko Motoyoshi  
 Co-chairpersons ..... June Asato  
   Melvin T. Hayase  
 Service/Dedication ..... Rev. Yukiko Motoyoshi  
   Harry Honda  
 Theme/T-Shirt ...           Jan Youth, Tom Yoshizawa  
 Banquet .....    Paul Tanaka  
   Gordon Watanabe  
 Luncheon .....   Joyce Nishioka and Fujinkai  
 Keirokai .....    Bob Asato  
 Open House .....   Lester Ogawa  
 Public Programs .....   Melvin T. Hayase  
 Publication .....           Rev. Yukiko Motoyoshi, June Asato  
 Invitations .....    Rev. Yukiko Motoyoshi  
   Gordon Watanabe  
 Publicity .....    Karen Oda  
   Dianne Yoshizawa  
 Gift .....   Rev. Yukiko Motoyoshi  
   Glenn Miura  
 Photography .....    Stephen Koito  
 Facilities .....    Darrell Ota, Roy Matsuda  
 Judo Tournament .....   David Nishioka and Judo Club  
 Junior Retreat .....   JoAnn Kawachi, Sharon Kuboyama  
 Career Fair .....           Corri Tanaka, Jan Youth and Jr. YBA

MAHALO to all of the members and friends who worked with the committees to plan and prepare for this Anniversary Celebration.



CELEBRATE THE HONGWANJI CENTENNIAL IN 1989